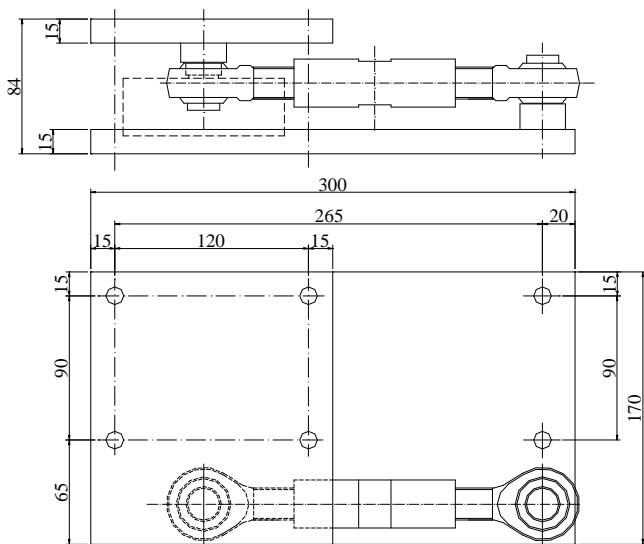


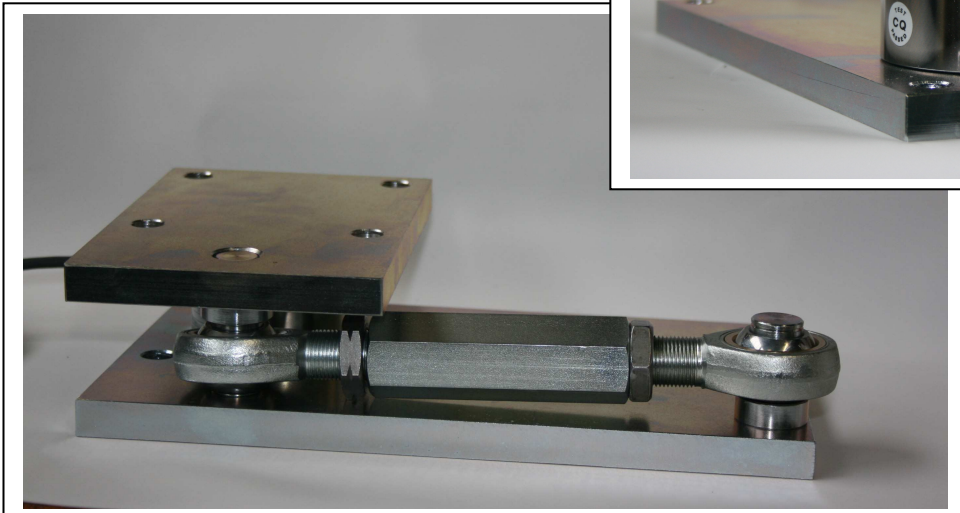
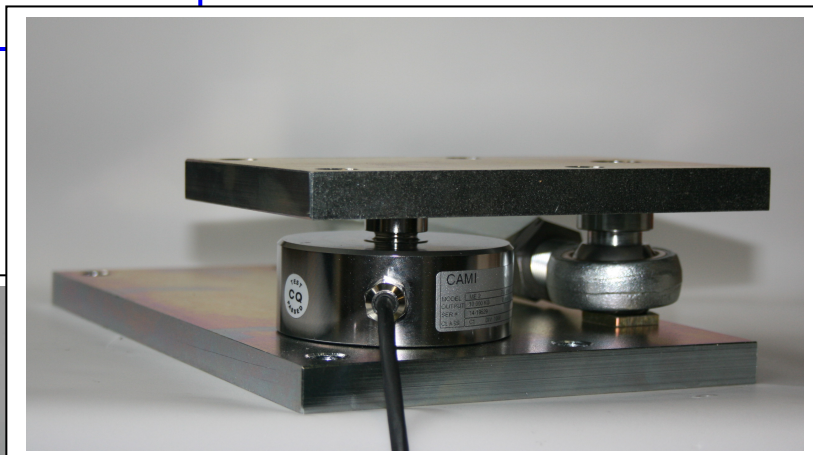
**KIT di montaggio per**  
**cella di carico a compressione ME1-2**



Model: ME12 - kit - Assembly ME12 cells kit  
Capacities: from 1 to 15 ton - Material: Plated Steel

**DIMENSIONAMENTO  
FINO A 15 TON**

**Kit per configurazione  
con 4 celle.**



**CAMI S.R.L.**

**PROGETTAZIONE E COSTRUZIONE STRUMENTI DI MISURA**

Via Alessandrini, 2 - 20090 TREZZANO S/N (MI)

Tel. 02 4840 0166 - Fax 02 4840 1905

[www.cami-it.com](http://www.cami-it.com) - e-mail [info@cami-it.com](mailto:info@cami-it.com)